

Don't miss out on a Football Coaching Traineeship



The Football Coaching Traineeship is an 11-week education and training programme that offers people aged 16 and above, who are interested in working in sports coaching, the skills and experience that football clubs, and the wider sports coaching industry, are looking for.

Delivered in partnership with sports education specialists, the traineeship includes a high-quality work experience placement, work preparation training as well as English and maths qualifications (if required).

Trainees are given the opportunity to build a CV and gain vital on-the-job experience along with industry-recognised qualifications. All of which makes them 'work ready' – boosting their chances of gaining employment as well as improving their long-term prospects.

When does the course begin and end?

Monday 30 April to Friday 13 July

What particular skills, experience or prior qualifications are required?

Little to no work experience in football coaching, qualified at Level 2 or below / no qualifications.

What are the entry requirements or restrictions?

You can apply for this programme if you are unemployed and aged 16 and above. The course will give you the necessary skills to be able to look for employment in the sector within six months.

What topics does the course cover?

The course covers football coaching, employability skills, health and safety in the workplace, first aid, functional skills, English and mathematics.

What are the progression or employment opportunities following this course?

Guaranteed interview for a paid position with TOCA, a company that specialises in high quality football training.

IN THIS EDITION

- 2 TV Talent scouted by Channel 4
- 2 Are you ready to take your photography hobby to the next level?
- 2 Weekly Shared Reading Groups starting at The Curve
- 3 Activities Programme at The Curve Community Centre
- 4 Support services on offer
- 4 Housing update
- 4 Don't miss out on free yoga sessions for men
- 4 Care for Grenfell

When and where is the interview/assessment for course enrolment?

Westminster Adult Education Service, Lisson Grove, NW8 8LW.

Register your interest now by calling **020 7641 1825** or by emailing traineeships@waes.ac.uk.

Local Council Election results 2018

The Local Election results for Kensington and Chelsea were announced in the early hours of **Friday (4 May)**.

There is no change in political control with the Conservatives securing 36 seats, Labour 13 and the Liberal Democrats one.

You can find the full results on the RBKC website at goo.gl/8hAXAp

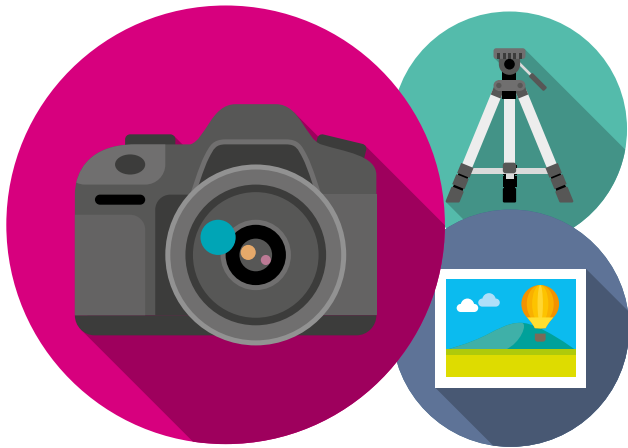
Are you ready to take your photography hobby to the next level?

Do you see yourself as a budding photographer? Would you like to work in the fast-paced photographic industry?

This could be your chance to take your hobby to the next level. Starting on **Friday 4 May**, an exclusive six-week course, to be delivered by professional photographers, will take place at **Churchill Garden's Youth Centre, Churchill Gardens Rd, Pimlico, SW1V 3HY**.

During the course you will get the chance to visit galleries and country estates to immerse yourself in the exciting world of photography. The course will provide you with the skills you will need to find employment.

The course will be held one day each week over a six-week period and a certificate will be awarded to those who complete the course. There are only 10 places available for this exciting opportunity so don't delay in contacting Andrew with your name and contact details at andrew@positiveview.org.uk or phone **020 8350 5820 / 07954 139868**.



TV Talent scouted by Channel 4

If you've ever wanted to work in the exciting world of television, this could be the opportunity for you.

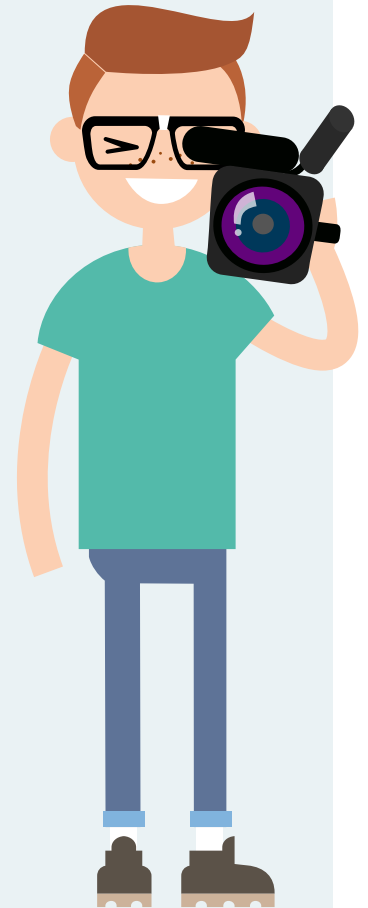
Channel 4 are searching for new up-and-coming, hard-working talent to join their team. Whether you're a post grad with a relevant degree (Film, TV, Media) or someone with no prior experience but a passion for all things TV, Channel 4 want to hear from you.

On offer are 16 places on a Production Training Scheme, suited more to those with some prior experience or relevant qualifications, and 12 production apprenticeships which would be more suited to those with no previous experience.

Both positions are paid and are based at various locations around the UK with Channel 4 welcoming applications from everyone and specifically encouraging BAME applicants and people with disabilities.

The lucky successful applicants will get a unique and rare insight into the industry, with opportunities to learn from those who work behind the scenes on the shows the nation love.

For more information, see jobs.channel4.com and be sure to apply before the deadline of **Monday 14 May**.



Weekly Shared Reading Groups starting at The Curve

"An anchor during the week"

"It always makes me feel more fulfilled than the other days"

"I always feel much better for it"

These are just some of the quotes from people who have attended the Shared Reading Groups.

Come and join the new Shared Reading Groups at The Curve, 10 Bard Road. You can listen to stories and poems read aloud; sit back and relax as the words wash over you and join in the conversation about what is being read in a friendly, safe and relaxing environment. Groups are open to all, readers and non-readers alike.

These groups are run by staff members and volunteers from The Reader, a charity and social enterprise that is passionate about the power of reading together and how it can connect us with what we are reading and with each other.

Join one of our groups:

**Every week on Wednesday
1pm-3.30pm**

Adult Book Break group

Every week on Wednesday 6pm-7pm

Multi-Generational Reading Together group (anyone from ages six to 96 are welcome to attend this group, but please note, children must be accompanied by an adult)



Activities Programme at The Curve Community Centre



Monday 7 May

- **5pm-7pm** – Homework Club ages 11-18 (drop in)
- **5.30pm-7.30pm** – Pre-ESOL English

Tuesday 8 May

- **9.30am-11.30am or 12.25pm-2.30pm** – ESOL – English language classes (please book by emailing: sakinah.touzani@westway.org)
- **10am-3pm** – Fouzia's Sewing Club: sew, stitch and knit
- **10.30am-12.30pm** – Helping children deal with loss (please book)
- **10.30am-12.30pm** – Job search workshops (drop-in)

Wednesday 9 May

- **9.30am-10.30am** – MEND mini - healthy lifestyles programme for families. (drop in)
- **10am-12pm** – World Coffee Morning
- **10.30am-12.30pm** – Job search workshops
- **10am-1pm** – Felt making with Heather: individual projects: slippers, small bags and purses (please email flourish@acava.org to book)
- **1pm-2.30pm** – Adults Shared Reading Group
- **2pm-4pm** – Drug and alcohol prevention (drop-in)
- **4pm-4.45pm** – Healthy snack time for kids (please book)
- **5pm-7pm** – Homework Club, ages five-11 (drop-in)
- **6pm-7pm** – Mixed age (adults and kids) Shared Reading Group (for both groups, drop in, and the groups are open to all reading abilities)

Thursday 10 May

- **10.30am-11.30am** – Baby Massage (please email semira.hassen@rbkc.gov.uk to book)
- **10.30am-12.30pm** – Helping children deal with loss (please book)
- **12.30pm-2.30pm** – Mums and bumps session (please email semira.hassen@rbkc.gov.uk to book)
- **1pm-3pm** – ICT skills and pre-employment support (drop in)
- **4pm-4.45pm** – Healthy snack time for kids (please book)
- **4pm-6pm** – Young artists (ages five-11): for keen young artists looking to learn and develop their skills.

Friday 11 May

- **1pm-3pm** – Parent support drop-in
- **9:30am-12:30pm** – Communication Class with Midaye, please book via email thecurve@rbkc.gov.uk



The Crèche's opening hours are:

Monday and Tuesday:

10am-12pm, 1pm-3pm

Wednesday and Friday: **10am-5pm**

No crèche on Thursdays

The Crèche is for parents attending appointments or courses at the Curve. Other Curve users are also able to use the crèche space when attending an event or activities. To book, please email: thecurve@rbkc.gov.uk

The Curve Community Centre opening hours are **10am to 8pm Monday to Friday** and **11am to 6pm** on weekends.

Some sessions need to be booked in advance to secure your place, so

email thecurve@rbkc.gov.uk and they will confirm your reservation by return.



For a full list of events visit grenfellsupport.org.uk/thecurve/events

Support services on offer

Anyone who would like to speak to the police in relation to the investigation into the fire is asked to contact the Met Police on **0800 032 4539**.

Important Contacts

Cruse Bereavement Care

Call the Freephone helpline on **0808 808 1677** or email helpline@cruse.org.uk.

The helpline is open **Monday-Friday** from **9.30am-5pm**. Extended hours Tuesday, Wednesday and Thursday evenings, until 8pm.

Replacement UK passports, visas or immigration queries

Call our advice line on **0300 303 2832**. The line is open 24 hours.

Air quality and smoke exposure

If you have concerns about any symptoms, please see your doctor or call NHS **111**.

Housing support

If you have any questions about housing or want to find out who your housing officer is please call **0800 137 111** or **020 7361 3008**.

Victim support

Call **0808 1689 111** for practical and emotional support, or visit victimsupport.org.uk. The line is open 24 hours a day.

The Grenfell Muslim

Response Unit also offers additional support. Find out more by emailing info@gmru.co.uk

You can also get physical and mental support at **The Curve Community Centre**. Call **077 1223 1133**.

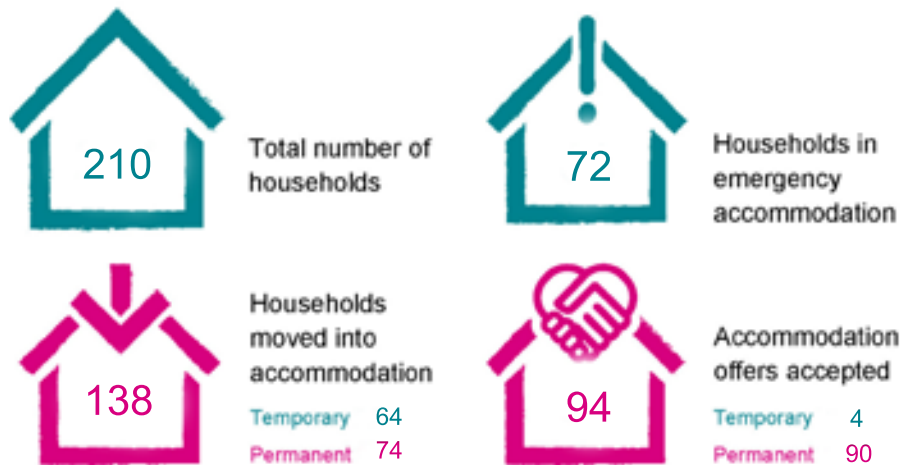
Hestia, Central and North West London NHS Foundation Trust, and the Drug and Alcohol Service are based overnight at the **Notting Hill Methodist Church, Lancaster Road, from 10pm to 8am**. Pop in for a chat and support.

Housing update

Grenfell Tower and Grenfell Walk



We have committed £235 million to finding new homes for residents and have now secured 307 properties for families. We invite households to choose which properties they want to view from all those available on our Home Connections website. Households currently living in temporary accommodation provided by the Council or our partners, also have the option to make these properties their permanent home if they wish. For those households living in hotels and who wish to move into a temporary home, we will help to find private rented accommodation. We will help with furniture, bedding, crockery and cutlery, white goods and utilities.



These numbers are accurate as of 3 May 2018

Come and have your say on the future of social housing

A workshop to give the local community the chance to have their say on the future of social housing is being held by Shelter on **Wednesday 9 May** from **6.30pm to 8.30pm** at **St Clement's Church, Treadgold Street, London, W11 4BP**.

This will be an opportunity for anyone who is interested in social housing, whether you currently live in social

housing, have previously lived in social housing, are on the waiting list or just have an interest, to share views, experiences and ideas for the future of social housing.

If you have additional requirements, please contact poppy.terry@shelter.org.uk or call **0344 515 2274**.

Care for Grenfell

- The Care for Grenfell team helps anyone who has been affected by the Grenfell tragedy and offers a single point of access to all Council services and support.
 - This phone line is open from **8am to 8pm** and also provides an out-of-hours service.
- Call: **020 7745 6414** | Email: careforgrenfell@rbkc.gov.uk

For regular updates please follow us | The newsletter is also available in Arabic and Farsi languages.

 [facebook.com/grenfellsupport](https://www.facebook.com/grenfellsupport)  [@grenfellsupport](https://twitter.com/grenfellsupport)  www.grenfellresponse.org.uk